



Our Marine Resources

~Let's have a look at the ones you know~



Turbo ('elili)



Trochus (takaniko)



Lobster ('uo)



Octopus (feke)



Giant clam (vasuva)



Ark shell (kaloa'a)



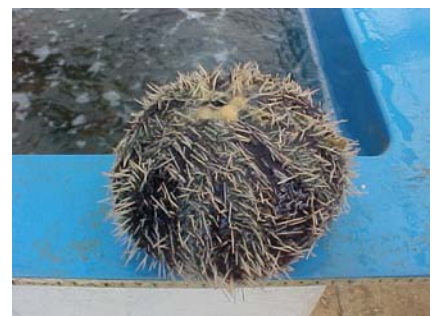
Turtle (fonu)



Crab (paka)



Sea cucumber (mokohunu)



Sea urchin (tukumisi)

Marine resources are limited. If you catch them carelessly, what will be happen in the future?

To save our resources, we should wait until they have fully grown.

MINISTRY OF FISHERIES
P.O.BOX 871 NUKU'ALOFA

Phone: 21399, 27799
Fax: 23891

