



# MINISTRY OF FISHERIES

## FISHERIES QUARTERLY REPORT

FIRST QUARTER 2023

January - March, 2023



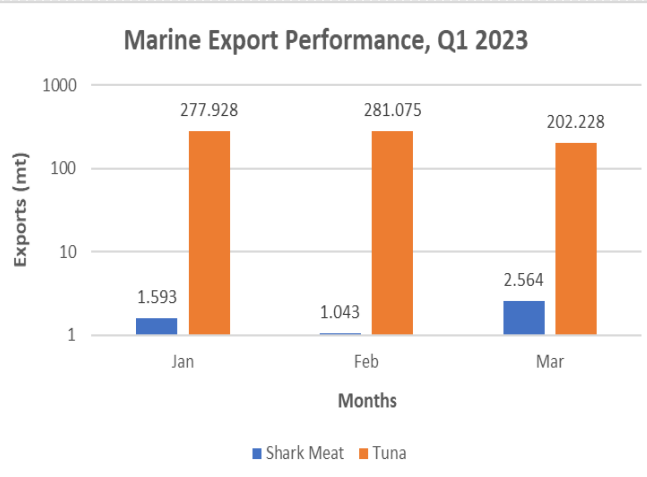
### MARINE EXPORTS

The total quantity of fish products exported this quarter was 766.431mt, where, 5.2mt of shark meat products and 761.231mt of tuna products. Snapper fishery has yet to be exported, but were only sold locally. Exporting of Tuna highly dominated the overall exports in this quarter with 99.3% and only 0.7% of shark meat exported. The exports for this quarter shows an increase from January to February then decrease in March because there were 5 active foreign fleets in Jan and Feb with good catch rate than March which were only 3 foreign fleets leading to a decline in March's export.

The total quantity of fish products exported this quarter (not including aquarium) shows an increase of 24.2% from the amount exported in the previous quarter (Q4, 2022). Also, there's an increase of 79.3% from that of the same quarter of the previous year (Q1, 2022).

The total FOB value of fish exports recorded in this quarter was approximately TOP 4.1millions. This is an increase of 20.9% from the total FOB value of products exported in the previous quarter and there's also an increase of 78.7% from that of the same quarter of the previous year.

*Source: Fish exports database*



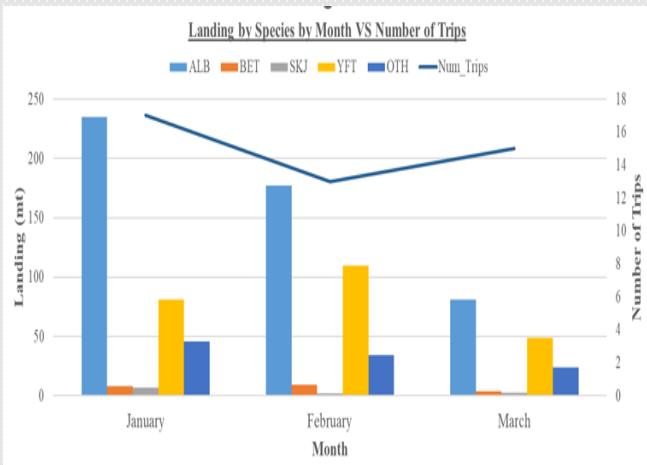
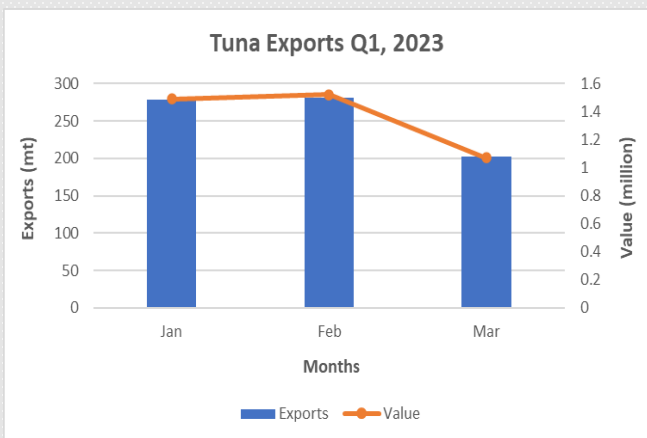
*\*FOB = Free On Board, describes a price which includes goods plus the services at the time of offloading from the vessel at first landing. This is a static value designated to each export product. The value is an historical estimate and may not represent the true present value.*

### TUNA FISHERY

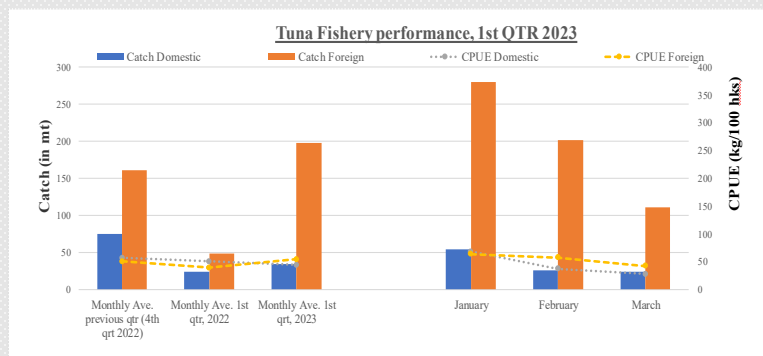
The total quantity of tuna exported this quarter was 761.231 mt which is an increase from that of the previous quarter and from the same quarter of the previous year. The total FOB value for tuna exported in this quarter was approximately 4 millions which greater than both of the previous quarter and as well as that of quarter 1 of previous year. Tuna exported this quarter shows an increased trend in January and February then decrease in March due to less active vessels with poor catch rate.

The total tuna unloaded this quarter was 870.1 metric tons which were caught from 45 trips. Foreign fleets continue to dominate in this fishery with very high catch landing of 762.5mt and 107.6mt for domestic vessels. The catch effort for both foreign and domestic fleets shows a decreasing trend throughout January to March due to climate change. The domestic vessel's catch for this quarter was only 107.6mt where there was an increased catch landing on January then decline in February and March due to changes in fleets engine.

The average overall performance of the Tuna Fishery for this quarter reveals a higher average catch of foreign vessel compared with that of previous quarter and quarter 1 of previous year (2022). However, the overall average catch for domestic fleet was lower than that of the previous quarter but slightly higher than the first quarter of 2022. As for the average catch and effort, this quarter is lower than that of the previous quarter and the same quarter of the previous year (2022). Hence, the average catch and effort for foreign fleets is slightly higher compared to both the first quarter last year and the previous quarter.

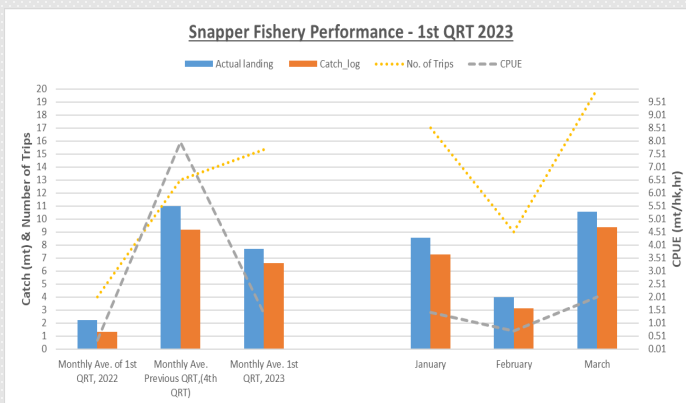


*Source: Ministry of Fisheries Tuna exports database*



A total catch of only 23.10 metric tons of snappers were unloaded within this quarter, which consists of 8.55mt in January, 3.98 in February and 10.57mt in March. This trend shows a decreasing from January to February due to many bad weather conditions and then increase in May which is proportion to the number of trips as well as the catch effort performance. Decreasing in the number of catch over time, signified that this because of bad weather conditions and climate change.

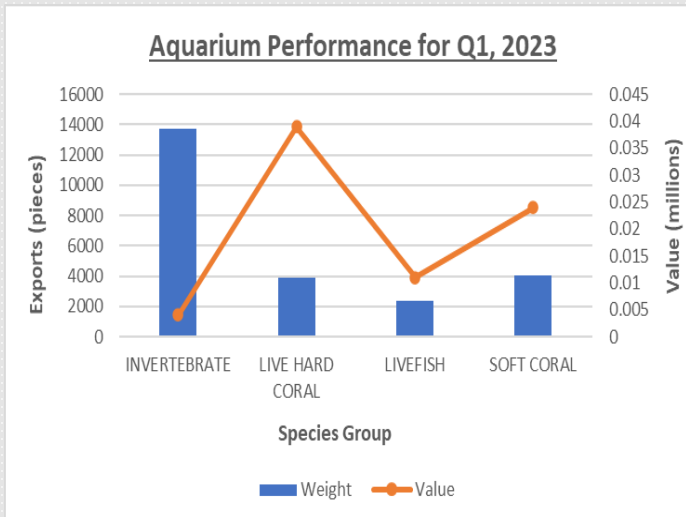
However, the overall average catches in quarter 1 of 2023 is slightly lower than the catches of the previous quarter and higher than the 1<sup>st</sup> quarter of year 2022. The average number of trips with an increasing trend from quarter 1 of 2022 being the lowest rising to the 1<sup>st</sup> quarter of 2023. In addition, the average catch effort decreased from the 1<sup>st</sup> quarter 2022 and continues to decrease from the previous quarter to the 1<sup>st</sup> quarter of 2023.



The total number of aquarium products exported in this quarter was 24052 pieces, whereas in the previous quarter, there were total of 26652 pieces, which shows a decreased of 10.8% due to changing seasons. Hence, in compared with the amount of aquarium products exported in the same quarter of the previous year, was 12276 pieces, which shows an increase of 48.9% from that of the same quarter of the previous year.

The exported aquarium products for this quarter was dominated by invertebrates exporting 13716 pieces, followed by soft coral, with 4047 pieces, then live hard corals exporting 3903 pieces, and the least exported aquarium product for this quarter was live fish with 2386 pieces.

The total FOB value of the exported aquarium products in this quarter was approximately TOP 0.075 millions. The total value for previous quarter were 0.016 millions which is a huge decrease of about 117.1%, meaning that previous quarter's value is almost the twice of the total FOB value for this quarter. However, there was an increase of 17.8% from that of the same quarter of the previous year (Q1, 2022), which was approximately 0.006 million.



The total quantity of tuna artisanal fishery recorded in this quarter was 4.9 metric tons which were caught and collected from 3 different sites. The highest volume of tuna-like species recorded during this quarter was at the Nafanua Wharf with 2.9mt, then Halaevalu Wharf with 1.5mt and Taufa'ahu Wharf followed with 0.513mt.

The highest catch landing this quarter was recorder in March, due to their higher number of trips than January and February, which shows more than 50% of the total catch recorded this quarter.

**Total Catch by Month by Species - Tuna-like species**

Month	BET	DOL	DOT	GBA	KAW	SHK	SKJ	WAH	YFT
January	0	0	0	0	0	0	450	100	100
February	0	0	0	0	0	0	350	50	50
March	0	0	0	0	0	500	1000	50	50

A total of 11.742 metric tons of marine resources recorded in this quarter, which is an increase of 37.3% from the previous quarter and a huge increase of 93% from that of the same period last year. However, the amount recorded this quarter was approximately valued at TOP\$0.18 millions which shows an increase trend from both of the values recorded in the previous quarter as well as the same quarter last year. The average domestic price varied from time to time according to market demand for fish but usually changes in fish market price is determined by quantity of marine product available at that time in the market.

**Source:** Ministry of Fisheries Artisanal database.

Figure 1 is a dual-axis chart showing the total weight (KG) and total value (TOP) of fish species across various markets. The left Y-axis represents Total weight (KG) from 0 to 2500. The right Y-axis represents Total value (TOP) from 0 to 25. The X-axis lists markets: Fausa Market, Fausa Wharf Market, Hofsa, Manjika, Patangata, Sopu, Tolloli, and Vaini. The legend indicates blue bars for Total weight (KG) and an orange line for Total value (TOP).

Market	Fish Species	Total weight (KG)	Total value (TOP)
Fausa Market	Andula	~100	~1.5
	Cryptops	~600	~10.5
	Giant clam	~100	~0.5
	Ma	~100	~0.5
	Labridae	~100	~2.0
	Other labridae	~100	~0.5
	Other mullet	~100	~0.5
	Other mullet	~100	~0.5
	Sea anemone	~100	~0.5
	Sea weed	~100	~0.5
Fausa Wharf Market	Andula	~100	~0.5
	Cryptops	~100	~0.5
	Ma	~100	~0.5
	Labridae	~100	~0.5
	Other labridae	~100	~0.5
	Other mullet	~100	~0.5
	Other mullet	~100	~0.5
	Sea anemone	~100	~0.5
	Sea weed	~100	~0.5
	Sea weed	~100	~0.5
Hofsa	Andula	~100	~0.5
	Cryptops	~100	~0.5
	Ma	~100	~0.5
	Labridae	~100	~0.5
	Other labridae	~100	~0.5
	Other mullet	~100	~0.5
	Other mullet	~100	~0.5
	Sea anemone	~100	~0.5
	Sea weed	~100	~0.5
	Sea weed	~100	~0.5
Manjika	Andula	~100	~0.5
	Cryptops	~100	~0.5
	Ma	~100	~0.5
	Labridae	~100	~0.5
	Other labridae	~100	~0.5
	Other mullet	~100	~0.5
	Other mullet	~100	~0.5
	Sea anemone	~100	~0.5
	Sea weed	~100	~0.5
	Sea weed	~100	~0.5
Patangata	Andula	~100	~0.5
	Cryptops	~100	~0.5
	Ma	~100	~0.5
	Labridae	~100	~0.5
	Other labridae	~100	~0.5
	Other mullet	~100	~0.5
	Other mullet	~100	~0.5
	Sea anemone	~100	~0.5
	Sea weed	~100	~0.5
	Sea weed	~100	~0.5
Sopu	Andula	~100	~0.5
	Cryptops	~100	~0.5
	Ma	~100	~0.5
	Labridae	~100	~0.5
	Other labridae	~100	~0.5
	Other mullet	~100	~0.5
	Other mullet	~100	~0.5
	Sea anemone	~100	~0.5
	Sea weed	~100	~0.5
	Sea weed	~100	~0.5
Tolloli	Andula	~100	~0.5
	Cryptops	~100	~0.5
	Ma	~100	~0.5
	Labridae	~100	~0.5
	Other labridae	~100	~0.5
	Other mullet	~100	~0.5
	Other mullet	~100	~0.5
	Sea anemone	~100	~0.5
	Sea weed	~100	~0.5
	Sea weed	~100	~0.5
Vaini	Andula	~100	~0.5
	Cryptops	~100	~0.5
	Ma	~100	~0.5
	Labridae	~100	~0.5
	Other labridae	~100	~0.5
	Other mullet	~100	~0.5
	Other mullet	~100	~0.5
	Sea anemone	~100	~0.5
	Sea weed	~100	~0.5
	Sea weed	~100	~0.5